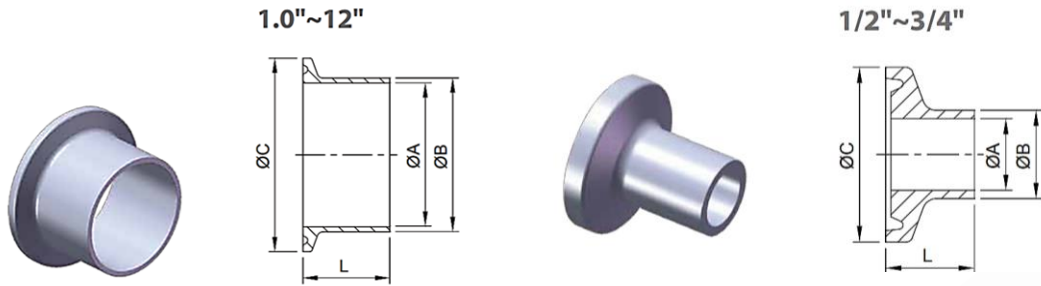


3A/ SMS Welding Ferrule



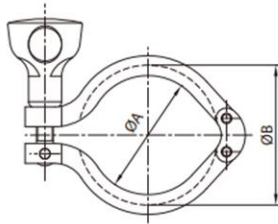
14WMP

14MMP

14AMP

SIZE	ØA	ØB	ØC	L	L	L
¼"	3.9	6.35	25	12.7	21.5	28.6
½"	9.4	12.7	25	12.7	21.5	28.6
DN15	9.7	12.7	25.4	12.7	21.5	28.6
¾"	15.75	19.05	25	12.7	21.5	28.6
DN20	15.95	19.05	25.4	12.7	21.5	28.6
1"	22.1	25.4	50.5	12.7	21.5	28.6
DN25	22.5	25	50.5	-	21.5	28.6
1 ¼"	28.45	31.75	50.5	12.7	21.5	28.6
1 ½"	34.8	38.1	50.5	12.7	21.5	28.6
DN38	35.5	38.1	50.5	-	21.5	28.6
2"	47.5	50.8	64	12.7	21.5	28.6
DN51	48.5	51	64	-	21.5	28.6
2 ½"	60.2	63.5	77.5	12.7	21.5	28.6
DN63.5	60.5	63.5	77.5	-	21.5	28.6
DN76	72.9	76.1	91	-	21.5	28.6
3"	72.9	76.2	91	12.7	21.5	28.6
DN104	100	104	119	-	21.5	28.6
4"	97.4	101.6	119	15.8	21.5	28.6
6"	146.86	152.5	166.87	-	21.5	28.6 or 38.1
8"	197.66	203.3	217.67	-	21.5	28.6 or 38.1
10"	247.2	254	268.47	-	21.5	28.6 or 38.1
12"	298	304.8	319.27	-	21.5	28.6 or 38.1

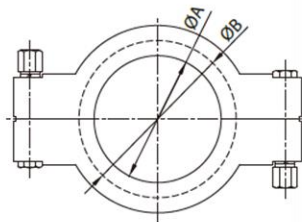
CLAMPS



13MHHM DOUBLE PIN CLAMP

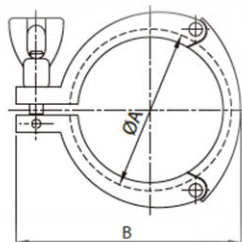
SIZE	ØA	ØB
½"~¾"	20	28
1"~1 ½"	43.6	53.6
2"	57	67
2 ½"	70.6	80.6
3"	84	94
4"	112	122
6"	155	170
8"	205	220.8

13MHP HIGH PRESSURE BOLTED CLAMP



SIZE	ØA	ØB
½"~¾"	20	28
1"~1 ½"	43.3	52
2"	56.4	65.5
2 ½"	69.5	79
3"	77.6	92.5
4"	108.8	120.5
6"	158	170
6 ½"	173	186.2
8"	222.5	237.5
10"	258.2	272.8
12"	309	327.6

13MHHS 3 PIECE CLAMP



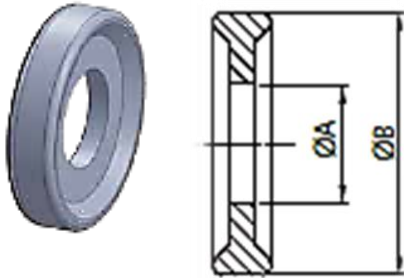
SIZE	ØA	ØB
1"~1 ½"	54	80
2"	67.5	94
2 ½"	80.9	109
3"	94	126
4"	122.4	154
12"	323.4	369

Ferrule Gaskets

(EPDM, SILICONE, VITON(FKM), PTFE)

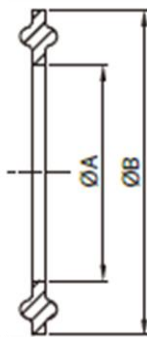
Plain Type 13PG

1/2"-3/4"



SIZE	ØA	ØB
½"	9.9	21.8
¾"	16.3	21.8
A37	15.5	33
1"	22.7	50
1 ¼"	29.5	50.5
1 ½"	35.9	50
2"	48.6	63.5
2 ½"	61.3	76.2
3"	74	88.9
3 ½"	86	97
4"	98.6	118
4 ½"	110.5	122
5"	134.7	146
6"	147.8	165
8"	196.6	216

(PTFE) ISO Type 13PG

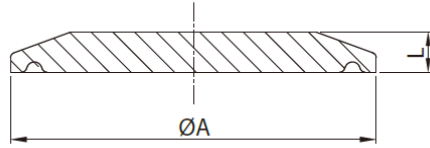


SIZE	ØA	ØB
DN8	11.1	33.2
DN12	14.8	33.2
DN15	18.9	33.2
DN20	24.5	49.7
DN25	31.3	49.7
DN32	40	49.7
DN40	45.9	63.2
DN50	57.1	76.7
DN65	72.9	90.2
DN80	85.7	105.2
DN100	109.9	129.2
DN125	134.5	154.2
DN150	163.1	182.2
DN200	211.9	232.7

(EPDM) DIN Type 13PG

SIZE	ØA	ØB
DN10	9.8	33.2
DN15	15.8	33.2
DN20	19.8	33.2
DN28	25.8	49.7
DN34	31.8	49.7
DN40	37.8	49.7
DN52	49.8	63.2
DN70	66.8	90.2
DN85	81.8	105.2
DN101.6	98.4	118.2
DN104	100.8	118.2
DN125	125.8	154.2
DN150	150.8	182.2
DN200	200.8	232.7

Blank Cap 16AMP



3A	DIN	ISO	$\varnothing A$	L
$\frac{1}{2}'' - \frac{3}{4}''$	-	-	25	6
A37	-	-	34	6.3
	DN10	DN8	34	6.3
	DN15	DN12	34	6.3
	DN20	DN15	34	6.3
1''	DN25	DN20	50.5	6.3
1 ½''	DN32	DN25	50.5	6.3
	DN40	DN32	50.5	6.3
2''	DN50	DN40	64	6.3
2 ½''	-	DN50	77.5	6.3
3''	DN65	DN65	91	6.3
	DN80	DN80	106	6.3
4''	DN100	-	119	7.9
	-	DN100	130	7.9
	DN125	DN125	155	7.9
6''	-	-	166.8	11.1
	DN150	DN150	183	11.1
8''	-	-	217.7	11.1
	DN200	DN200	233.5	11.1
10''	-	-	268.5	11.1
12''	-	-	319.3	11.1